

TULANE UNIVERSITY
STADIUM
COMMUNITY FORUM

11 July 2012

AGENDA

SITE ORIENTATION

TIMELINE

FACILITY OPERATIONS

CAMPUS GAME DAY ACTIVITIES

PRE-GAME

POST-GAME

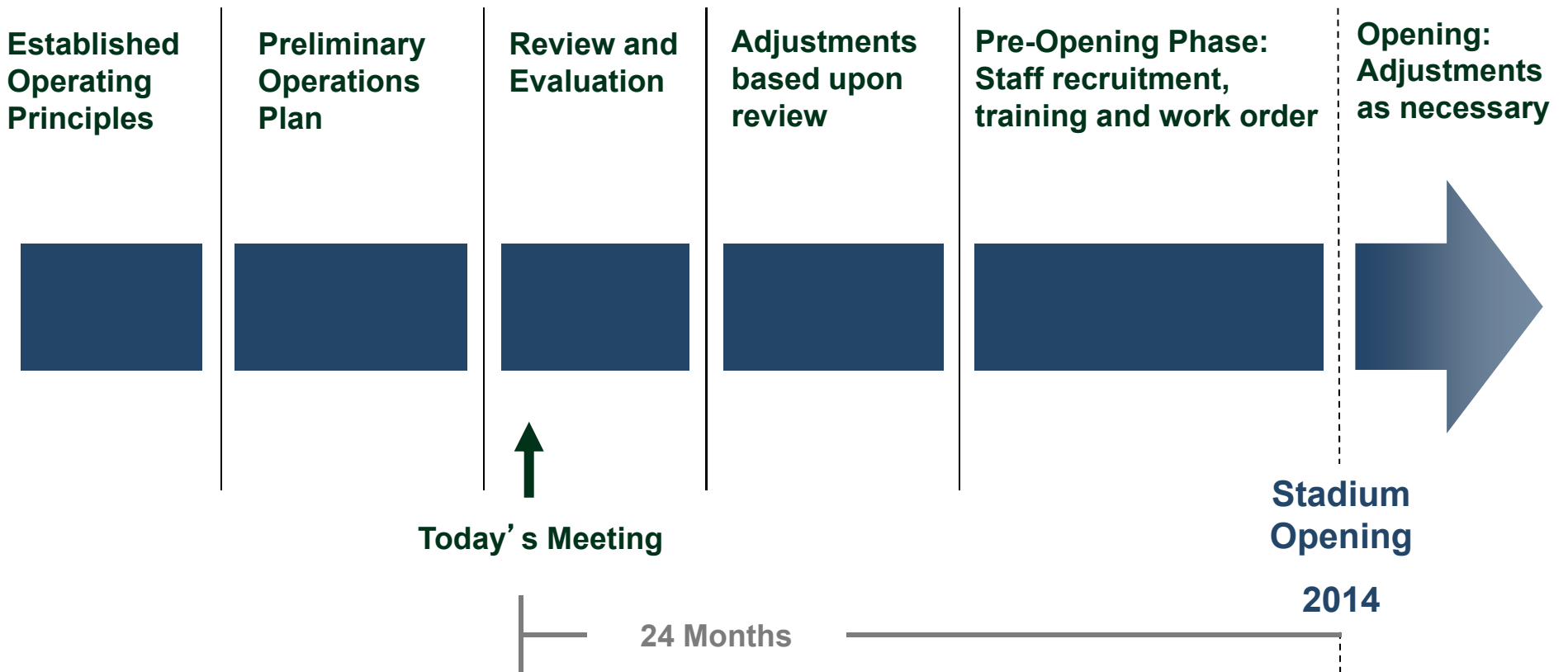
SITE ORIENTATION



Tulane Stadium

* For illustration purposes only.

TIMELINE OPERATIONS PLAN

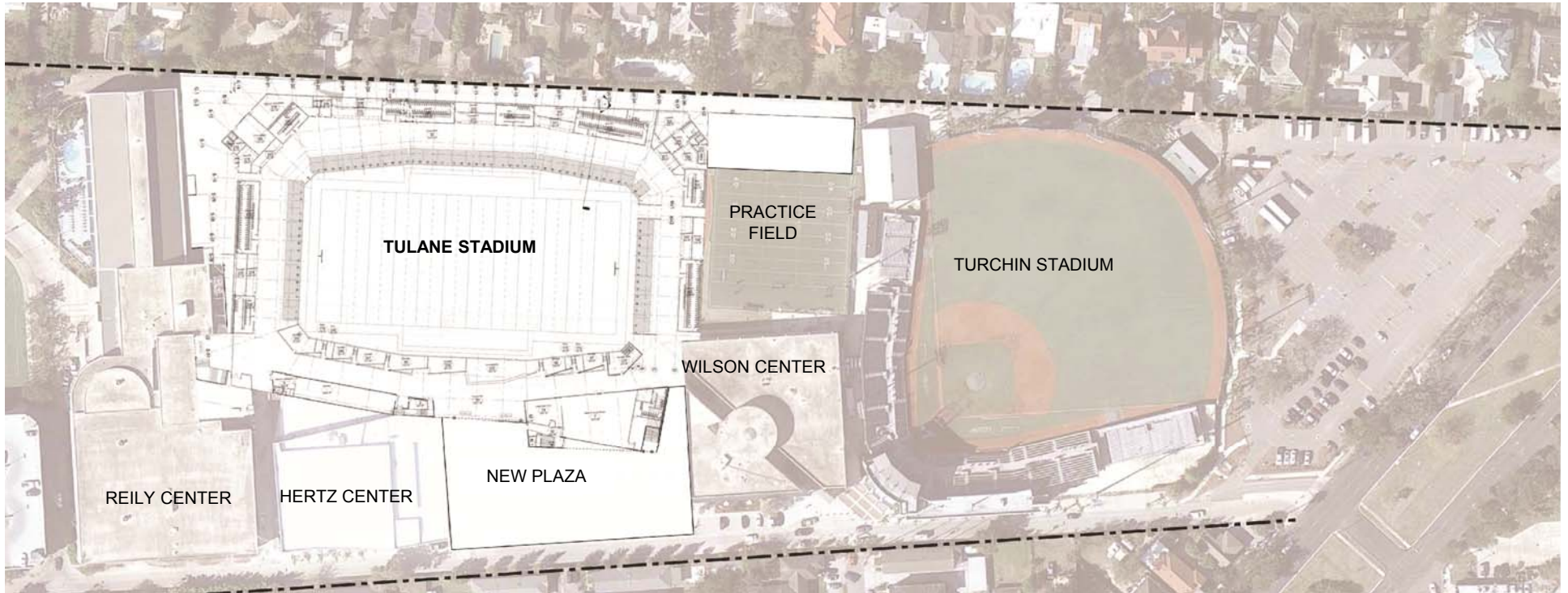


TULANE STADIUM FACILITY OPERATIONS

ATHLETICS CAMPUS



ATHLETICS CAMPUS



* For illustration purposes only. Based on current schematics and subject to change.

FACILITY OPERATIONS

Tulane University Public Safety
New Orleans Police Department
Emergency Medical Services
Event Services
Ushers / Guest Services
Ticket Takers
Box Office Personnel
Concessions / Catering
Merchandise

Network / Television Production (if applicable)
In-House Audio / Video
Media
Engineering
Grounds Crew
Housekeeping
Post-Janitorial
Waste Removal / Recycling Provider

NOTE: Services necessary for facility operations.

GAME WEEK TIMELINE FACILITY OPERATIONS

All activities during the week will occur during Tulane's normal working hours which are 7:30 a.m. to 5:00 p.m..

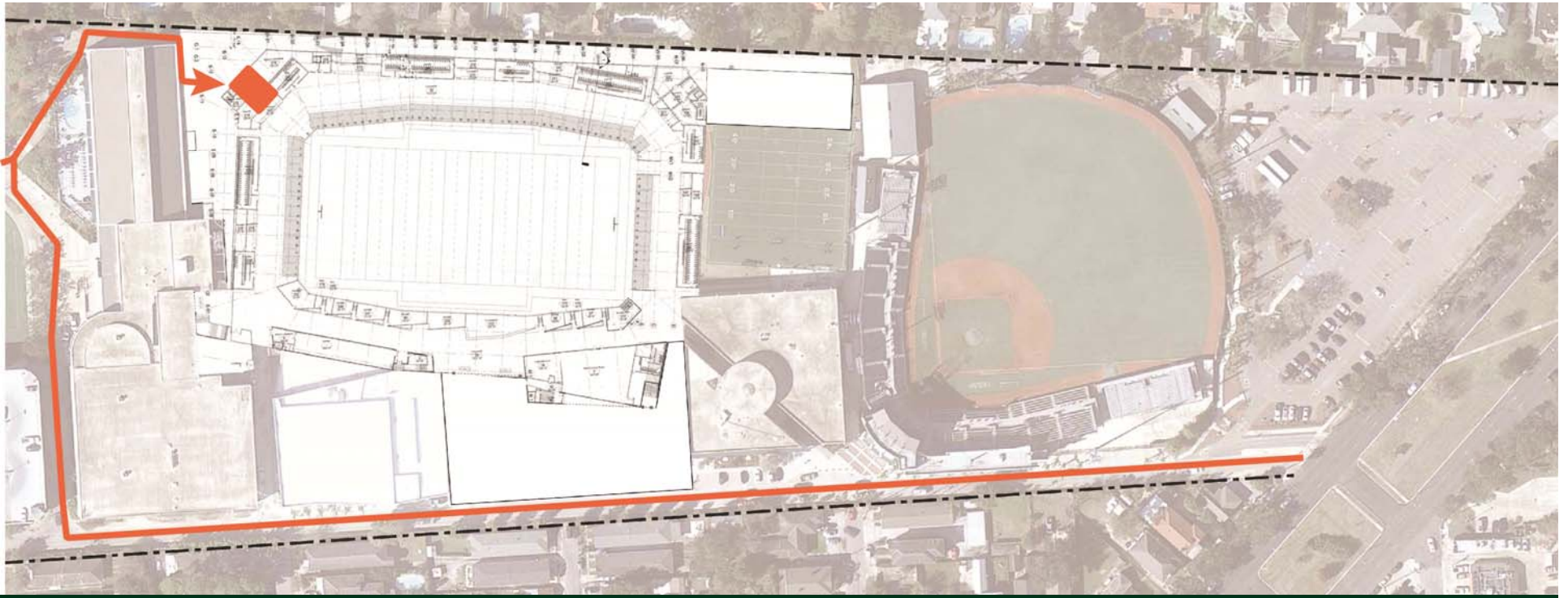
Wednesday	Thursday	Friday	Game Day	Sunday
Concession Deliveries Team Practice	Concession Deliveries Team Practice	Concession Deliveries TV Trucks Park & Power (if applicable) Visiting team equipment truck arrival All waste emptied Team Practice	Details on following slide	Post-janitorial returns to complete stadium clean-up Trash emptied from game (No earlier than 9 AM)

GAME DAY TIMELINE FACILITY OPERATIONS

To be adjusted for night and special games on game-by-game basis.

ARRIVAL	PRE-GAME	OPERATIONS	POST GAME	DEPARTURE
4 hours before	1.5 hours before	Game-time	1.5 hours after	4 hours after
Staff arrival begins by shuttle	Closure of Ben Weiner Drive	Total campus clean sweep begins	Visiting team departs	TV trucks depart
Campus pre-game functions begin	Gates open to public	Limited staff departure commences by shuttle	Staff departure continues by shuttle	Visiting team equipment truck departs
Concessions stocked	Pre-game activities start in stadium	Pre-game activities breakdown starts	Post-event Janitorial arrives by shuttle	Post-event Janitorial finishes first wave of clean up
Security personnel in position		Phased clean up begins	Patron shuttle bus departure	Pre-game activities breakdown concludes
Shuttles begin to arrive				

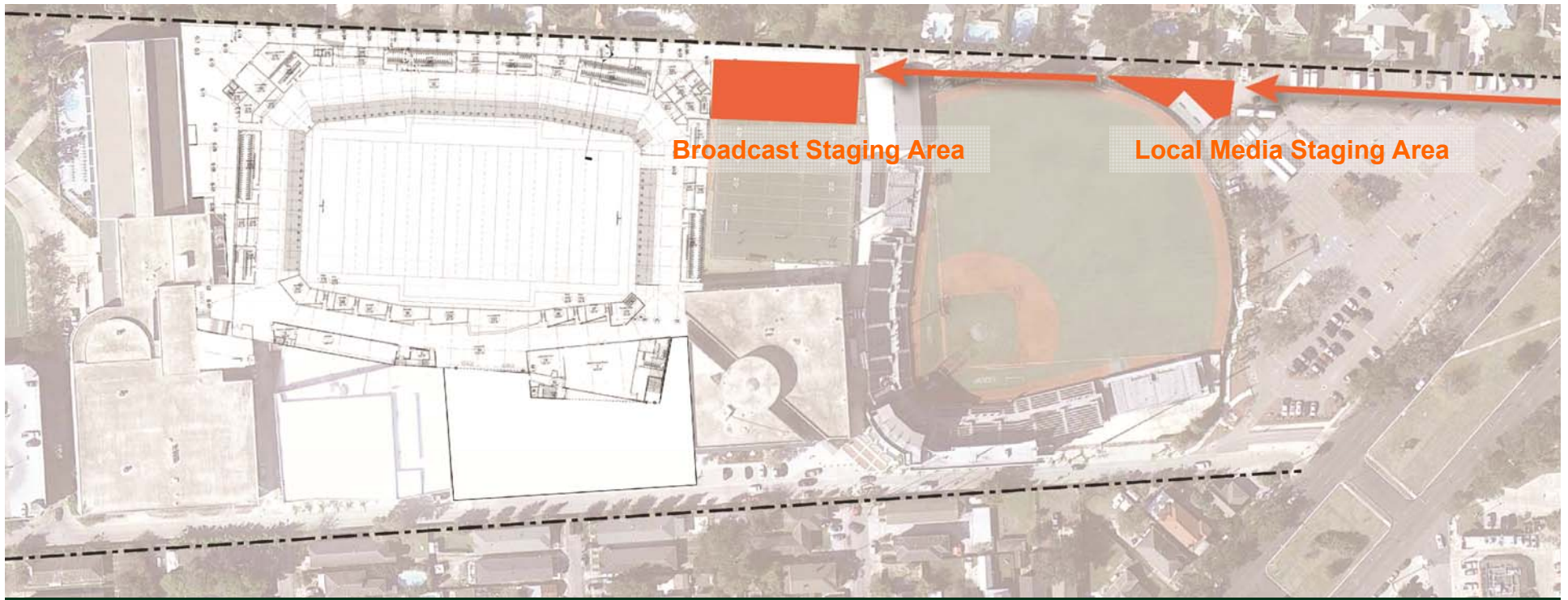
FOOD & BEVERAGE DELIVERY PLAN



- ❖ Limited hours of operation
- ❖ Controlled access
- ❖ No game day delivery

 Commissary

BROADCAST / MEDIA GAME DAY PLAN



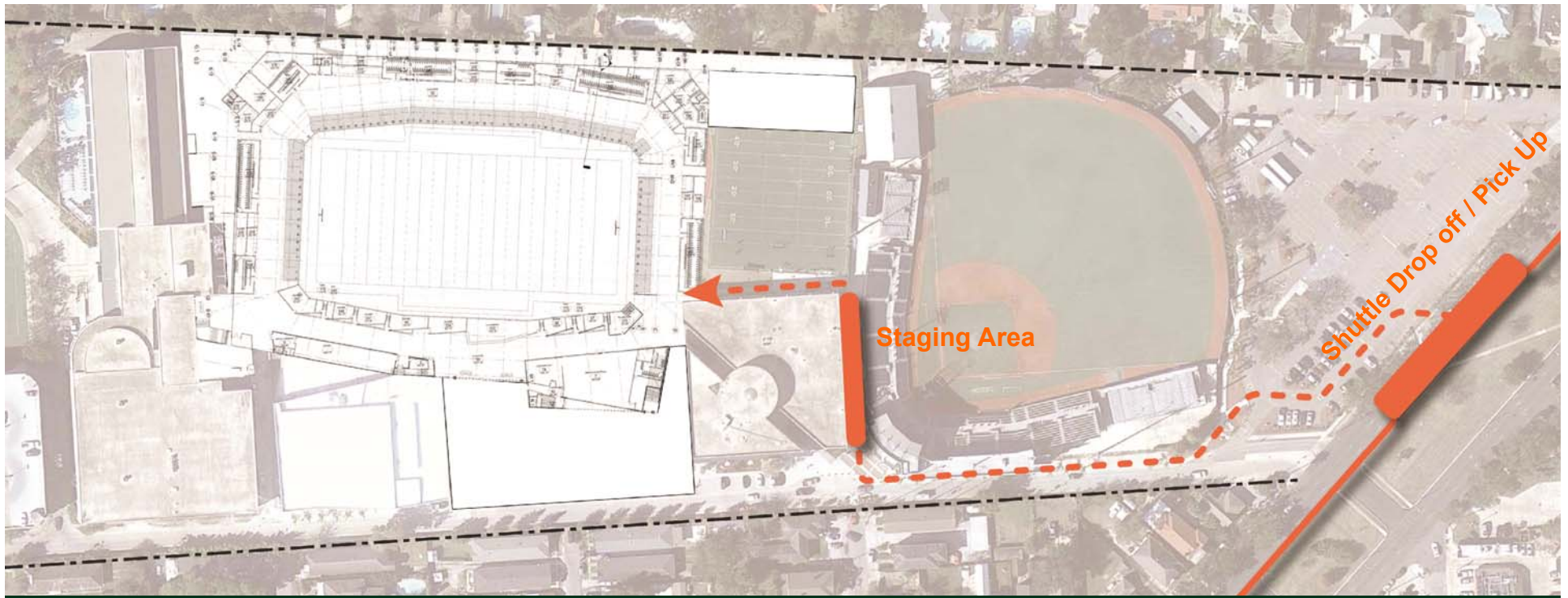
- ❖ Arrives day before game (network)
- ❖ Departure no later than 4 hours after game
- ❖ Controlled access

SECURED PERIMETER GAME DAY PLAN



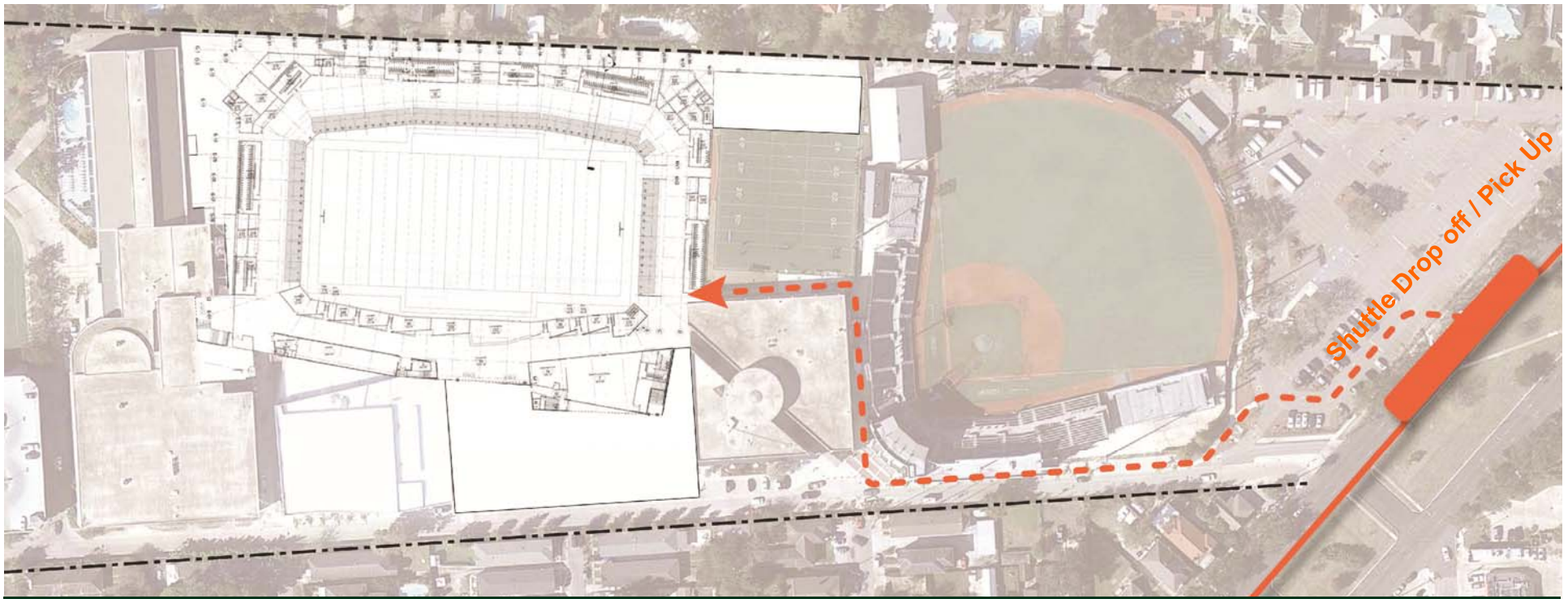
- ❖ Perimeter secured 24 hours prior to kick-off
- ❖ Tulane University Public Safety coordinates security activities
- ❖ Perimeter to remain in effect 4 hours post game

STADIUM EMPLOYEE GAME DAY PLAN



- ❖ Clock-In at Superdome
- ❖ Report to job assignment locations
- ❖ Clock-Out at Superdome

POST EVENT JANITORIAL GAME DAY PLAN



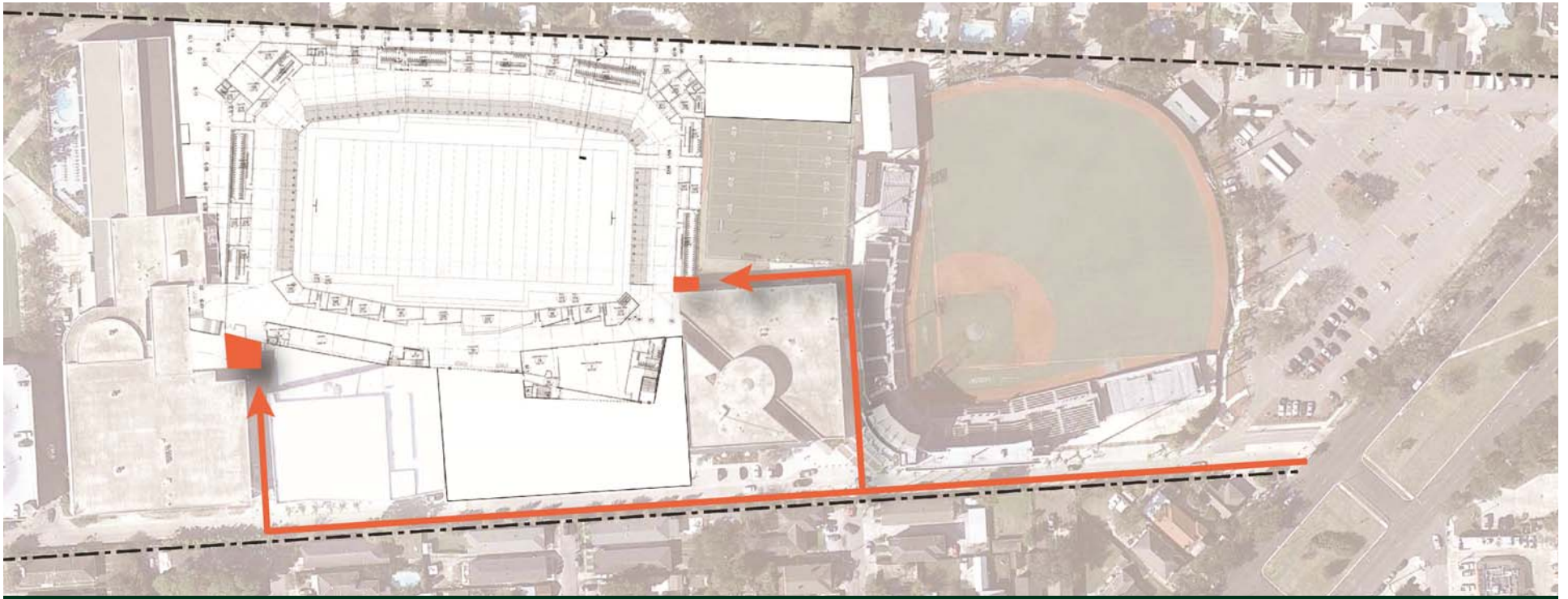
- ❖ Staff arrives 1.5 hours pre-game
- ❖ Pick and Sweep only [no motorized equipment]
- ❖ First wave clean up complete in 4 hours



NIGHT GAME CHANGES

- ❖ Confined clean up night of game
- ❖ Clean up completed following day

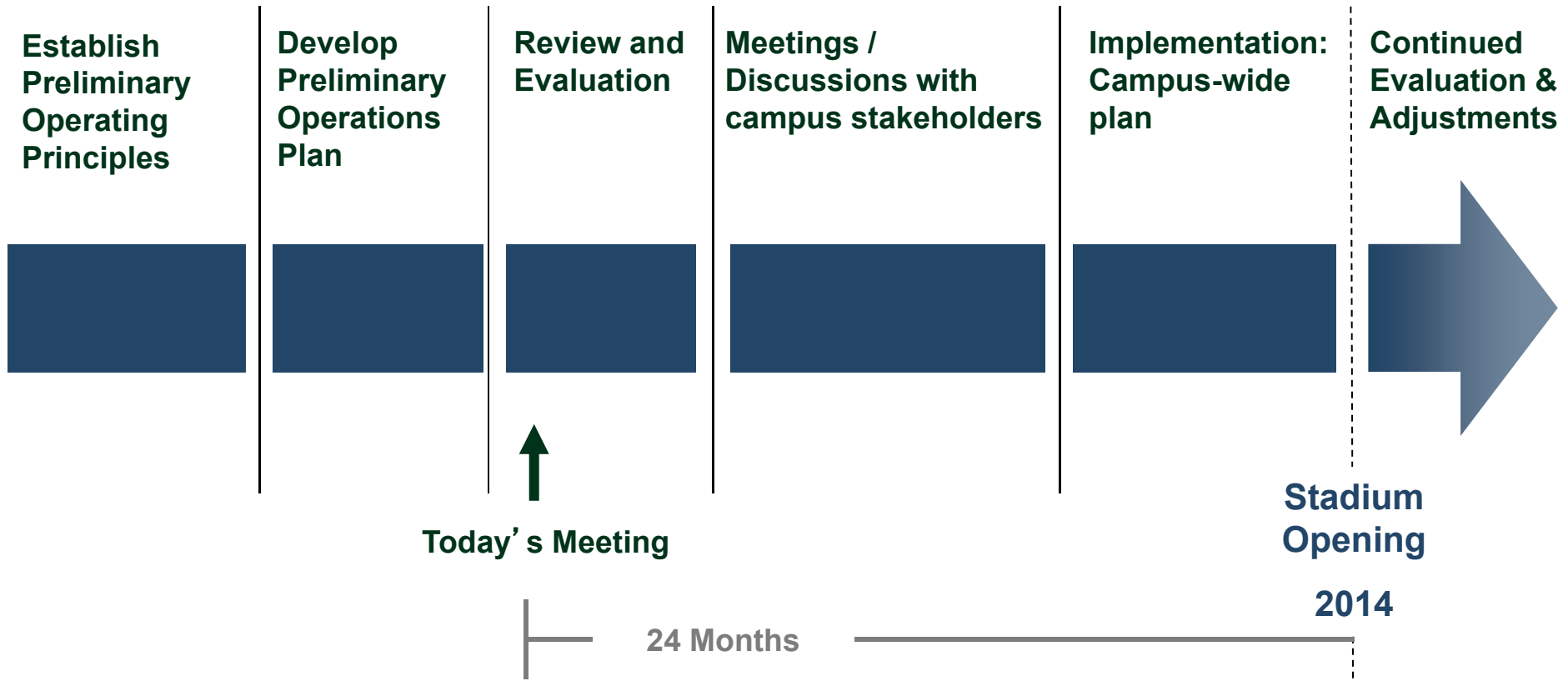
WASTE REMOVAL OPERATIONS PLAN



- ❖ Limited hours of operation
- ❖ Controlled access
- ❖ No game day activity
- ❖ Enclosed compactor designed for odor containment

**TULANE STADIUM
CAMPUS
GAME DAY ACTIVITIES**

TIMELINE CAMPUS GAME DAY ACTIVITIES PLAN



PRELIMINARY OPERATING PRINCIPLES

Designated hospitality zones and tailgating areas

No unauthorized open flames



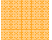

Port-o-Lets provided

No overnight parking

Dedicated RV satellite parking lot

COMPONENTS CAMPUS GAME DAY ACTIVITIES



-  Hospitality & Tailgating
-  Student Life
-  Intramural / Club Sports
-  Pre-Game Walk

Gibson Quad

McAlister Place
LBC Quad
Newcomb Place
Newcomb Quad

Alumni House
Glazer Gardens &
Bocce Court

New Plaza

Turchin Stadium


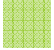
SCHEDULE CAMPUS GAME DAY ACTIVITIES

PREPARATION	ACTIVITIES COMMENCE	ACTIVITIES CONCLUDE	BREAKDOWN
≈ 24 hours before	≈ 4 hours before	≈ Game time	≈ 4 hours after
<p>Game Day Parking Plan activated</p> <p>Tents and Staging built</p> <p>Sponsorship areas set</p> <p>Catering / Concessions set</p>	<p>Campus opens to game day parking</p> <p>Hospitality areas open</p> <p>Litter abatement zones activated</p>	<p>All pre-game functions and hospitality areas cease operations</p> <p>Initial clean up of neighborhoods starts</p>	<p>Tents and Staging breakdown</p> <p>Stages breakdown</p> <p>Sponsorship areas breakdown</p> <p>Catering/Concessions breakdown</p> <p>Litter abatement & clean up continues/completed</p>

NOTE: Subject to change depending on game time, opponent and various other factors.

CAMPUS GAME DAY SECURITY



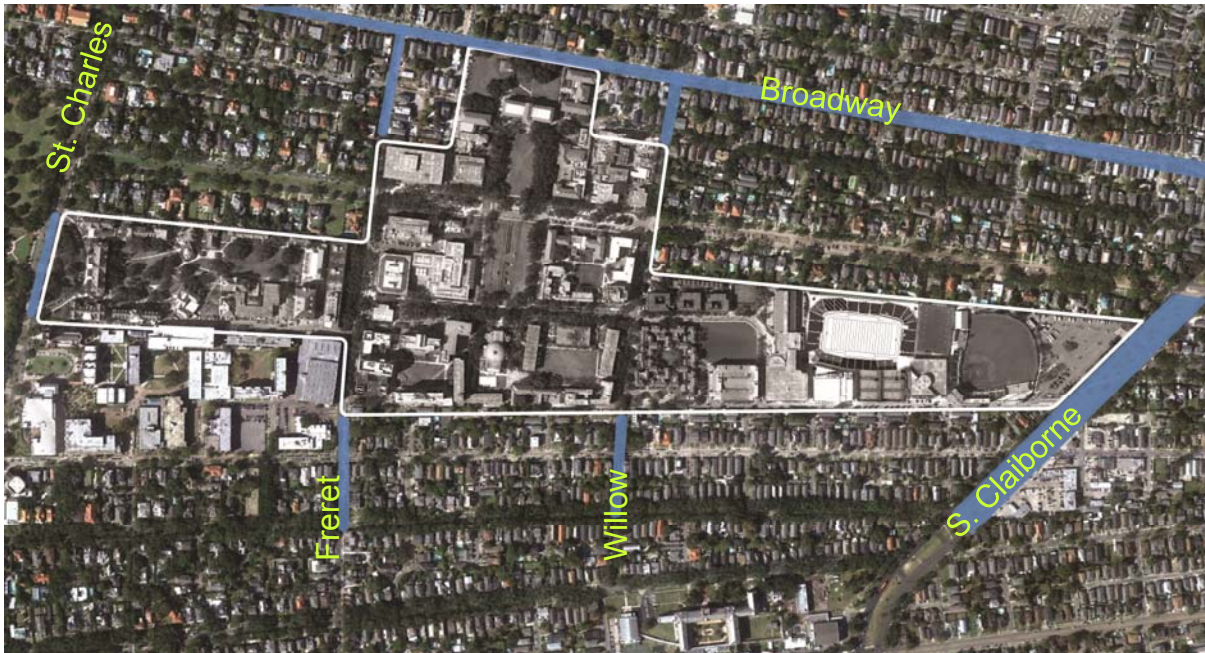
-  Stadium – Limited Access
-  Campus – Patrolled by Tulane University Public Safety

CAMPUS GAME DAY LITTER ABATEMENT



- Four separate litter abatement teams
- Activated by command post
- Work in concentrated areas

NEIGHBORHOOD GAME DAY CLEAN UP ZONES



 Neighborhood clean-up zones

— Similar to current neighborhood clean up activities

Thank you for your time.

This presentation can be found at...

www.tulanestadium.com